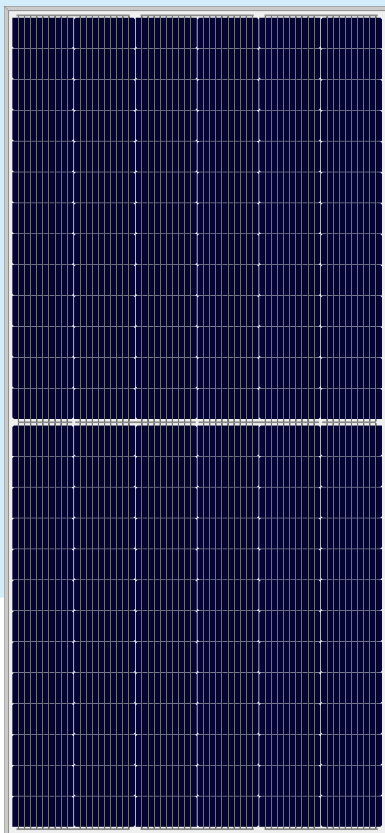


HCP78X9

400~415W

Half-Cell High Efficiency PV Module



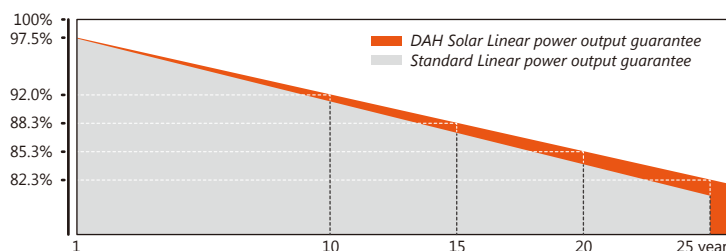
Comprehensive Products and System Certificates

IEC 61215 / IEC 61730 / CE / JPEA / FIDE / INMETRO
 ISO 9001: 2015 / Quality management system
 ISO 14001: 2015 / Standards for environmental management system
 OHSAS 18001: 2007 / International standards for occupational health & safety



Quality Guarantee

- 12-year** Material & technology warranty
- 25-year** Linear power output warranty



Max Module Efficiency

20.63%



Half-cell & High eff.

9BB Half-cell technology, Higher output power



Less Shading Effect

Unique circuit design, Minimize shading effect



Lower Temperature

Lower temperature coefficient, Lower hot spot temperature



Weather Resistance

Pass Anti PID test. 100% double EL test, Minimizes micro-cracks

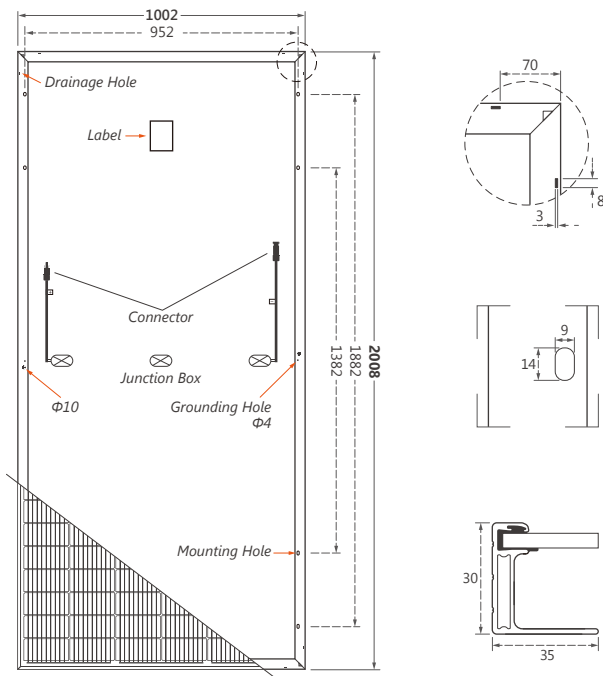


T6 Frame

T6 frame, better mechanical load, safer and more stable

HCP78X9 400~415W

Design



Mechanical Specification

Cells Type	Mono 158.75×79.375mm
Weight	24.3kg
Dimension (L×W×T)	2008×1002×30mm
Cable	400mm and 1400mm
(Including connector)	
No. of Cells	156(6×26)
Packing	27pcs/pallet, 270pcs/20GP, 580pcs/40HQ
Glass	3.2 mm High Transmission, Antireflection Coating
Junction box	IP68, 3 Bypass Diodes
Connector	QC4 or MC4 Compatible

Operating Parameters

Maximum system voltage	1000V/1500V DC
Operating Temperature	-40 ~ +85°C
Maximum series fuse rating	20A
Snow load, frontside	5400Pa
Wind load, backside	2400Pa
Nominal operating cell temperature	45°C±2°C
Application level	Class A

Electrical Characteristics(STC)

Module Type	HCP78X9-400W	HCP78X9-405W	HCP78X9-410W	HCP78X9-415W
Maximum Power (Pmax)	400W	405W	410W	415W
Open-circuit Voltage (Voc)	51.4V	51.5V	51.6V	51.8V
Maximum Power Voltage (Vmp)	42.8V	43.0V	43.2V	43.4V
Short-circuit Current (Isc)	9.87A	9.93A	9.97A	10.04A
Maximum Power Current (Imp)	9.35A	9.42A	9.50A	9.57A
Module Efficiency (%)	19.88%	20.13%	20.38%	20.63%
Power Tolerance	0~+5W			
Temperature Coefficient of Isc	0.05%/°C			
Temperature Coefficient of Voc	-0.31%/°C			
Temperature Coefficient of Pmax	-0.38%/°C			
Standard Test Environment	Irradiance 1000W/m ² , Cell temperature 25°C, Spectrum AM1.5			

Electrical Characteristics(NOCT)

Module Type	HCP78X9-400W	HCP78X9-405W	HCP78X9-410W	HCP78X9-415W
Maximum Power (Pmax)	302W	306W	309W	313W
Open-circuit Voltage (Voc)	48.5V	48.7V	48.9V	49.1V
Maximum Power Voltage (Vmp)	39.7V	39.9V	40.1V	40.3V
Short-circuit Current (Isc)	8.06A	8.12A	8.18A	8.24A
Maximum Power Current (Imp)	7.61A	7.66A	7.72A	7.77A
Standard Test Environment	Irradiance 800W/m ² , Cell temperature 20°C, Spectrum AM1.5, Wind speed 1m/s			